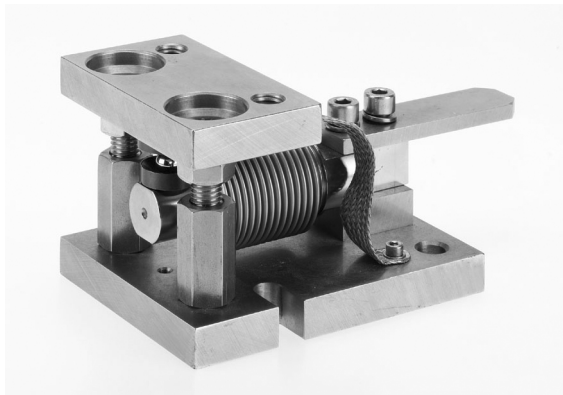


## Low Capacity Weigh Module



### FEATURES

- Capacity range:  
11.2, 22, 44, 110, 220, 440, 551 and 1.1K lb  
(5, 10, 20, 50, 100, 200, 250, and 500K kg)
- Load beam hermetically sealed to IP68
- High-grade stainless-steel construction
- Overload and uplift safety protection
- Accommodates process dynamics and thermal expansion

### DESCRIPTION

EZ-Mount Weigh Modules are designed for maximum accuracy coupled with a high degree of resistance to the adverse effects of overload and sideload forces. Each module consists of a bending beam transducer packaged in a rugged stainless steel mounting system. Specifically designed for use on low capacity process vessels, modules meet IP68 and NEMA 6 immersion requirements and mechanically resist high overload and sideload forces. Built in load adaption technology automatically compensates for vessel thermal expansion and contraction.

A substantial protection plate, positioned above the cable entry gland, prevents damage from plant debris and traffic.

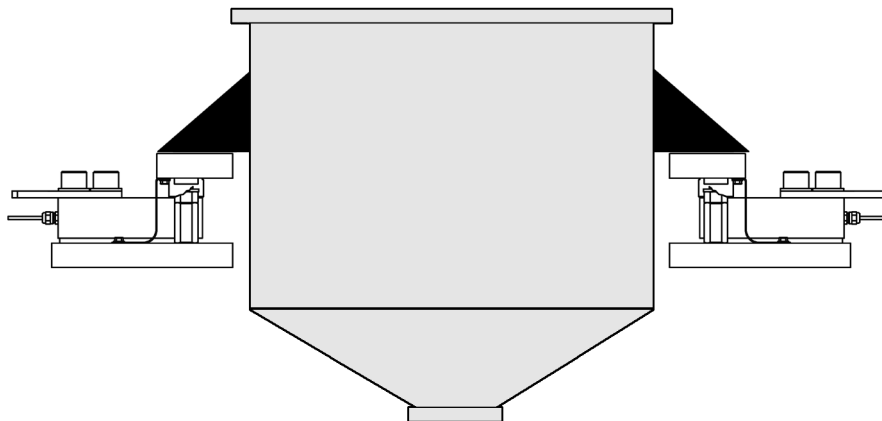
Simplified bolting patterns expedite both retrofit and new vessel installations. EZ-Mount modules can be fully installed without the load beam, reducing any risk of load cell failure. After installation, simply slide the beam into place and adjust the overload safety stops.

In frequent washdown areas, the ground strap may be removed (after installation) without affecting module performance.

### APPLICATIONS

- Storage tank weighing
- Bin/hopper scale conversion
- Level system measurement
- Loss-in-weight feeders

### CONFIGURATION



### SPECIFICATIONS

#### Performance

Capacities	11.2, 22, 44, 110, 220, 440, 551 and 1.1K lb (5, 10, 20, 50, 100, 200, 250, and 500K kg)
Rated Output (R.O.)	2.0mV/V +/-0.1%
Repeatability	0.02% R.O.
Combined Error*	0.015% R.O.
Zero Balance	2% R.O.
Creep (30 minutes)	0.03% R.O.
Temperature Effects:	
On Zero Balance	0.0013% R.O./°F
On Span	0.0008% Load/°F

#### Temperature

Safe Range	-22 to 176°F
Compensated Range	+14 to 104°F

#### Adverse Load Ratings

Safe Load	150% Rated Capacity
Ultimate Load	300% Rated Capacity

#### Material

Beam and Plates	high grade stainless steel
-----------------	----------------------------

#### Sealing

Environmental Class	IP68*
---------------------	-------

#### Electrical

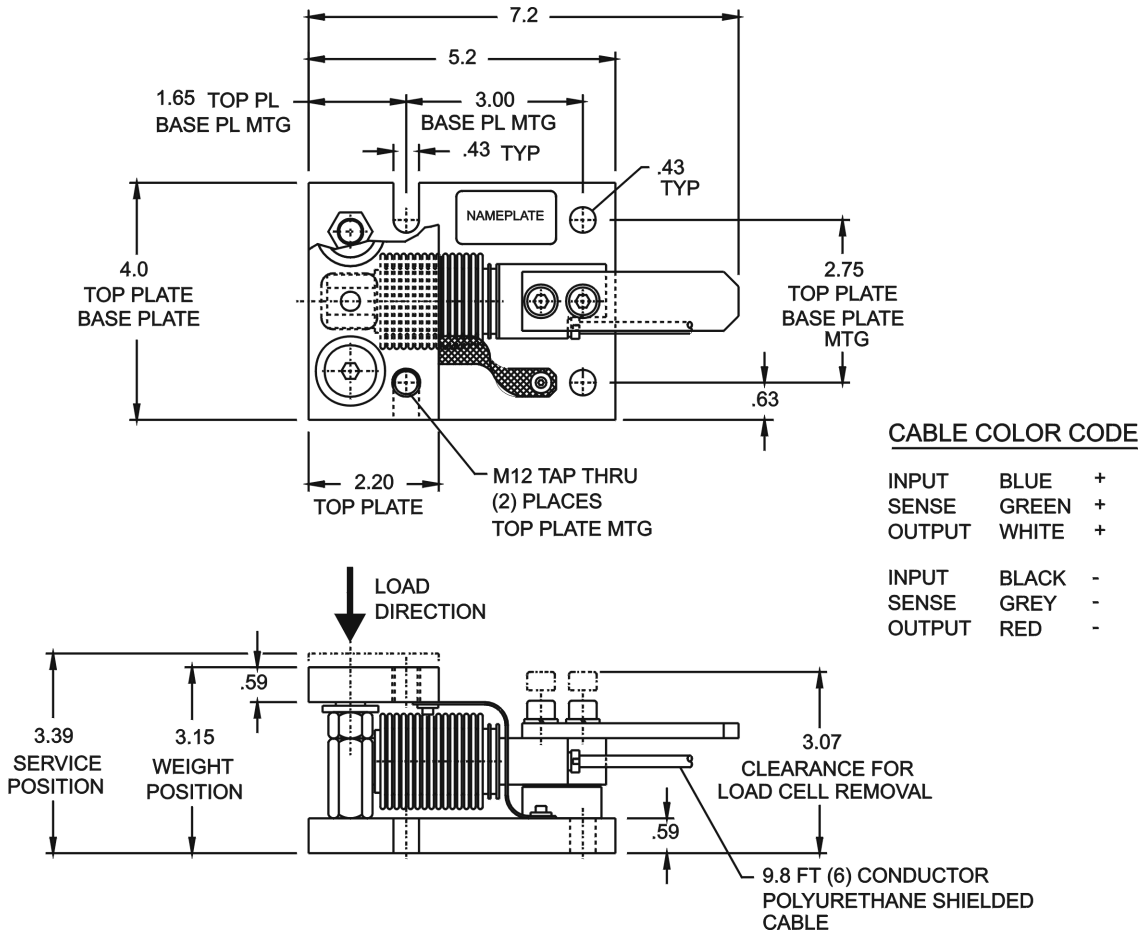
Recommended Excitation	10Vdc (15V max.)
Input Resistance	380 ohms ±10 ohms
Output Resistance	350 ohms +10/-3 ohms
Cable Length	9.8 foot cable with 6wire polyurethane jacket

#### Deflection Under Load Unit Weight

All Capacities	<0.016 inch
----------------	-------------

\*beam specification only

### OUTLINE DIMENSIONS



BLH is continually seeking to improve product quality and performance. Specifications may change accordingly.

## Disclaimer

All product specifications and data are subject to change without notice.

Vishay Precision Group, Inc., its affiliates, agents, and employees, and all persons acting on its or their behalf (collectively, "Vishay Precision Group"), disclaim any and all liability for any errors, inaccuracies or incompleteness contained herein or in any other disclosure relating to any product.

Vishay Precision Group disclaims any and all liability arising out of the use or application of any product described herein or of any information provided herein to the maximum extent permitted by law. The product specifications do not expand or otherwise modify Vishay Precision Group's terms and conditions of purchase, including but not limited to the warranty expressed therein, which apply to these products.

No license, express or implied, by estoppel or otherwise, to any intellectual property rights is granted by this document or by any conduct of Vishay Precision Group.

The products shown herein are not designed for use in medical, life-saving, or life-sustaining applications unless otherwise expressly indicated. Customers using or selling Vishay Precision Group products not expressly indicated for use in such applications do so entirely at their own risk and agree to fully indemnify Vishay Precision Group for any damages arising or resulting from such use or sale. Please contact authorized Vishay Precision Group personnel to obtain written terms and conditions regarding products designed for such applications.

Product names and markings noted herein may be trademarks of their respective owners.